



design
print
flex banners
glow signs
safety signs
acrylic LED sign
corporate sign
modular signs
industrial signs
metal sign
mementos
laser engraving
clip on sign
exhibition displays
canvass prints
customized wall paper

silver impressions



designing



mementos



greetings & souvenirs



professional photography



bus back panels



hoardings



silver impressions

when it comes to creativity
& work efficiency we never give up

services we offer :

- Designing
- Large format printing
- Large format Eco solvent Printing (Hi Res.)
- Retail Signage Graphics
- LED Sign, Neon Signs, & Metal Signs
- Acrylic Displays
- Safety & Industrial Signs
- Large format printing
- Laser Cutting, Engraving, CNC Router Work
- Modular Signs
- Mementos & Corporate Gift
- Professional Photography

Infrastructure

- Design Studio
- 4 X 8 Uv Flatbed (Print on any surface)
- 10 ft Monotech's Pixeljet (512 i) Solvent Printer
- 5 ft Epson Sure Color Eco Solvent Printer
- 4 X 8 ft Laser Cutting Machine With Print & Cut
- 5 X 10 CNC Router
- Channel Bending Machine
- Liquid Letters Machine
- 5 ft XL Jet Lamination Machine
- 5 feet Plotter(Print & cut)
- Well Equipped Fabrication Work Shop

Work Area : Pan Maharashtra, Goa & Diu-Daman

Well trained team of Fabrication & Installation
Outdoor Advertisement Network

k.



corporate & retail signages



Some of our esteemed client

United Breweries

U.S.L.

Mahindra & Mahindra

Thyssenkrupp Ele. Steel

Rothe Erde

Bedmutha Industrieis

Polygenta

Shivananda Electronics

Bharat Petroleum

Hindustan Petroleum

India Security Press

Traction Machine Workshop

Indian Railway Ele. Eng. Nkrd

Onida Ac

Electrolux

Akai

Playwin

Idea Cellular

Nokia

Samsung Mobile

B.S.N.L.

Tata Indicom

Dunlop tyres

C.R.I Pumps

Netafim Irrigation

Nehru Yuva Kendra

S.B.I.

Vyapari Bank

Veershaiva Bank

S.V.C. Bank

Darshan Academy

Pravara Education

N.D.Wines

Indage Wines

Rio Wines

Fashion Planet

Vishwas Tea

Catapharma

Dande Jewellers

Utasav Oil

Fortune Oil

Karda Construction

OmSai Buildcon

Archit Builders

Shree Buildcon

Vishwas Tea

Catapharma

Dande Jewellers

Mahindra Agri Solution

Fouth Dimension

Oxyzone

Shital Deore Interiors

Vicky Bothra Interiors

Nilkamal Plastics

Ved Sales corporation

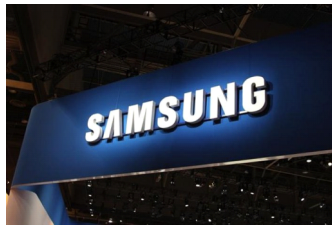
Patwa Sales

HDFC Bank

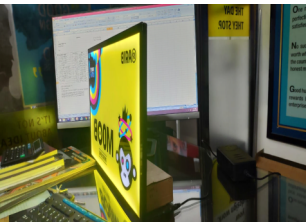
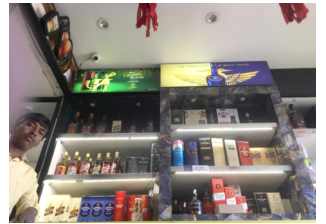
Bank of Baroda



corporate & retail signages



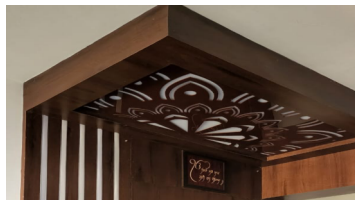
corporate & retail signages



new age neon signs



interior work



name plates & member list



wooden Name plates



modular Signs



exhibitions displays



Since 1998



ADVANCED DIGITAL SIGNAGE

Online Cloud-Based Digital signage device allows your customers to enjoy a one stop solution for all digital communication requirements



- * Access through centralized location and manage multiple displays at once with a click of a button.
- * Access through outlet visits by brand representative and quickly update from the mobile app without Wi-fi.



Easel | Totem | Wall-mount | Hanging | Outdoor

Since 1998



ADVANCED DIGITAL SIGNAGE

Welcome to **Silver Impressions**,

Your premier destination for cutting edge digital signage display solutions
We take pride in our state of art product, ensuring top-notch quality and reliability.

We provides a unique platform to captivate your audience with powerful visuals on YOUR terms.

Adapt content through online remote access or mobile-enabled app with complete ease when you want, and how you want.

Focus only on business performance and leave the safety of the software and hardware on USBbecause we believe scaling is simple when you trust the best in business.

Why Digital Signage ?

Digital signage solutions create a cohesive and dynamic in-store environment. it's a great way to display eye catching visuals, promote new arrivals and up sell products

Some advantages :

- Capture the attention of shoppers.
- Convey brand identity and promote product offerings effectively.
- Consistency in messaging and branding builds trust.
- Fosters loyalty.
- Boosts sales.
- Enhances brand vallue.

Content Management System to give your customers powerful software with customization and a secure experience



Since 1998



Digital signage is a versatile technology with application across various sectors. Here are some major sectors and businesses that can benefit from investing in digital signage.

ADVANCED DIGITAL SIGNAGE

Retail stores

Price, promotion, and campaigns display

Local Shops

Promote multiple products in dynamic displays

Malls

Show direction, information, and seasonal offers

Hotels

Greet guests with high-resolution displays

Restaurants

Digital menu boards, and new offers on display

Events

Customize with welcome screens and more

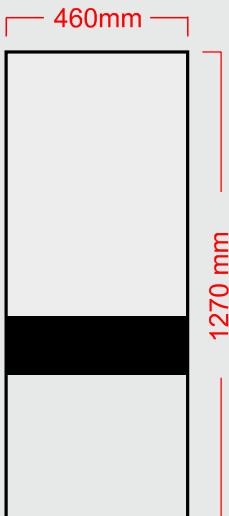
Ultimately, the strategic use of digital signage, whether cloud-based or offline, empowers to adapt the market trends swiftly, and fortify their brand presence in a ever-evolving retail landscape.

It ensures uninterrupted communication with customers maintaining brand consistency. In store screens can display tailored content, enhancing product visibility and creating a memorable shopping atmosphere.



EASEL Digital Signage

ADVANCED DIGITAL SIGNAGE

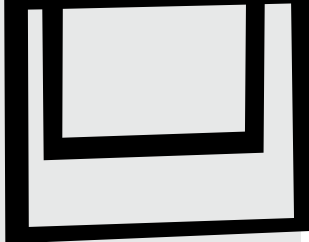
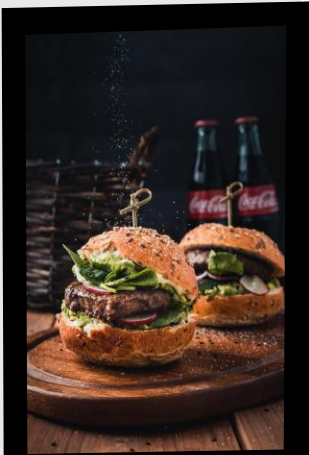


Screen size	Model code
32" (Easel)	EDS 32
43" (Easel)	EDS 43

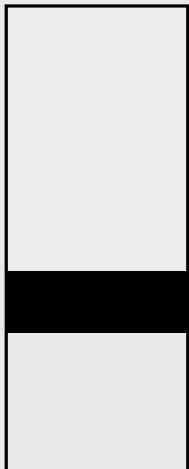
Screen size	31.40"
Resolution	HD 1366 x 768p
RAM	1 GB
ROM	8 GB
Viewing Angle	178 Degree
Brightness	350 nits
Usability	Indoor
Power consumption	50W Max
Supported files	image.jpg/ video. mp4
operating system	Android
Warranty: 1 year	
Colour Options : Black I White	
Customisable on request (Charges may apply)	

EASEL Digital Signage

ADVANCED DIGITAL SIGNAGE



610mm



1574 mm

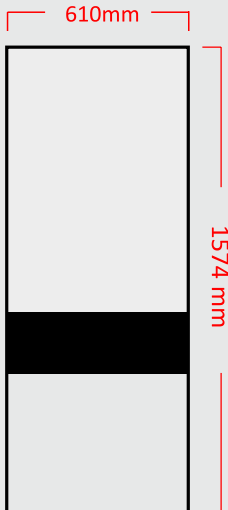
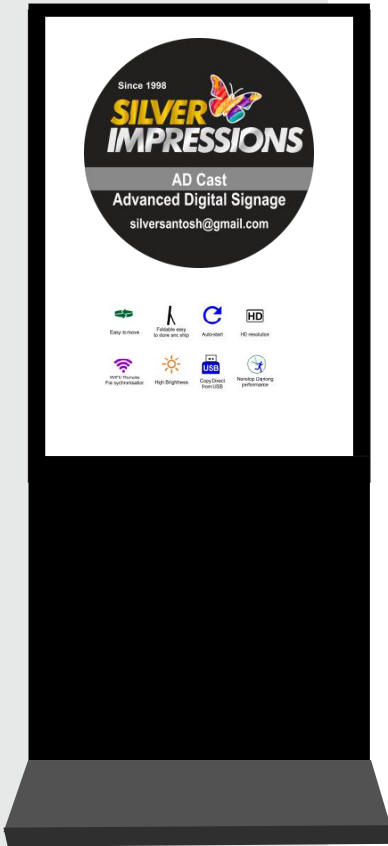
Screen size	Model code
32" (Easel)	EDS 32
43" (Easel)	EDS 43

Screen size	31.40"
Resolution	HD 1366 x 768p
RAM	1 GB
ROM	8 GB
Viewing Angle	178 Degree
Brightness	350 nits
Usability	Indoor
Power consumption	50W Max
Supported files	image.jpg/ video. mp4
operating system	Android
Warranty: 1 year	
Colour Options :	Black White

Customisable on request (Charges may apply)

TOTEM Digital Signage

ADVANCED DIGITAL SIGNAGE



	Model code
32" (TOTEM)	TFS 32
43" (TOTEM)	TFS 43
50" (TOTEM)	TFS 50
Screen size	49.10"
Resolution	Full HD 1920 x 1080
RAM	1 GB
ROM	8 GB
Viewing Angle	178 Degree
Brightness	350 nits
Usability	Indoor
Power consumption	75W Max
Supported files	image.jpg/ video. mp4
operating system	Android
Warranty: 1 year	
Colour Options : Black White	
Customisable on request (Charges may apply)	

Wall Mount Digital Signage

Ceiling-Mount Digital Signage

ADVANCED DIGITAL SIGNAGE

WMS 32



WMS 43



Start from 24" to 85"

32" (WALL MOUNT)

43" (WALL MOUNT)

WMS 32

WMS 43

Screen size	31.40"
Resolution	HD 1366 x 768p
RAM	1 GB
ROM	8 GB
Viewing Angle	178 Degree
Brightness	350 nits
Usability	Indoor
Power consumption	50W Max
Supported files	image.jpg/ video. mp4
operating system	Android
Warranty: 1 year	
Colour Options :	Black White
Customisable on request (Charges may apply)	

